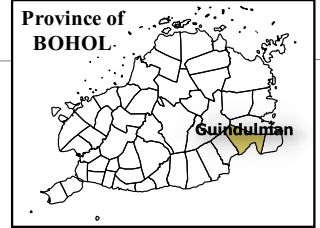


124°23'0" 124°25'0" 124°27'0" 124°29'0" 124°31'0"



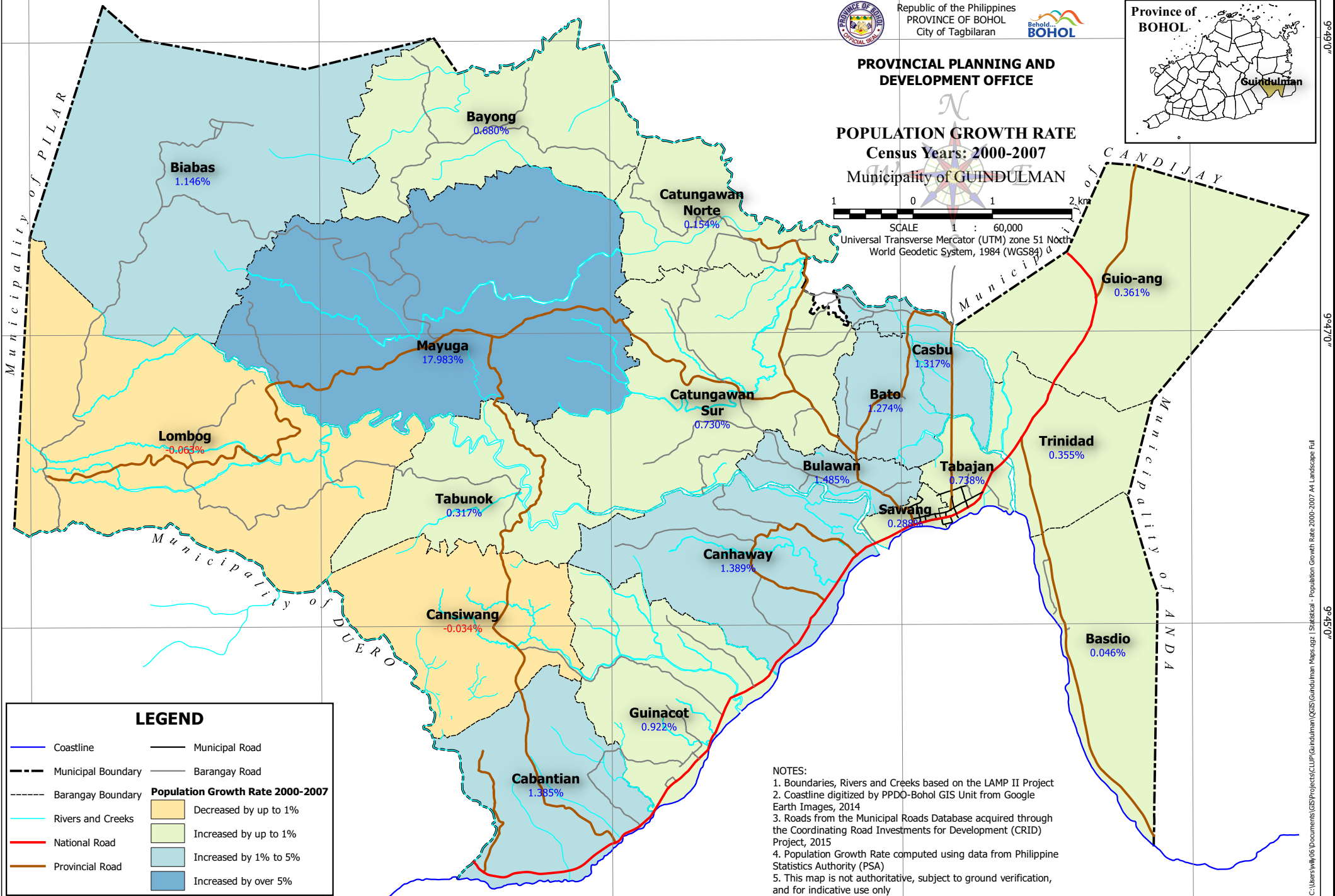
Republic of the Philippines
PROVINCE OF BOHOL
City of Tagbilaran



PROVINCIAL PLANNING AND DEVELOPMENT OFFICE

POPULATION GROWTH RATE
Census Years: 2000-2007
Municipality of GUINDULMAN

1 0 1 2 km
SCALE 1 : 60,000
Universal Transverse Mercator (UTM) zone 51 North
World Geodetic System, 1984 (WGS84)



LEGEND

Coastline	Municipal Road
Municipal Boundary	Barangay Road
Barangay Boundary	Population Growth Rate 2000-2007
Rivers and Creeks	Decreased by up to 1%
National Road	Increased by up to 1%
Provincial Road	Increased by 1% to 5%
	Increased by over 5%

NOTES:
 1. Boundaries, Rivers and Creeks based on the LAMP II Project
 2. Coastline digitized by PPDO-Bohol GIS Unit from Google Earth Images, 2014
 3. Roads from the Municipal Roads Database acquired through the Coordinating Road Investments for Development (CRID) Project, 2015
 4. Population Growth Rate computed using data from Philippine Statistics Authority (PSA)
 5. This map is not authoritative, subject to ground verification, and for indicative use only

124°23'0" 124°25'0" 124°27'0" 124°29'0" 124°31'0"